

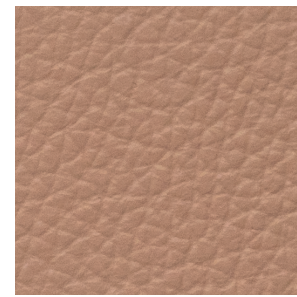
PIENO FIORE, CONCIA AL CROMO, TINTURA/RIFINITURA PASSANTE SEMI-ANILINA, RIFINITURA SEMIPOLIURETANICA ALL'ACQUA
FULL-GRAIN, CHROME TANNING, PENETRATING SEMI-ANILINE DYEING AND FINISHING, WATER-BASED SEMI POLYURETHANE FINISH
PLEIN FLEUR, TANNAGE AU CHROME, TEINTURE/FINISSAGE PASSANT SEMI-ANILINE, FINITION SEMI-POLYURETHANE A BASE D'EAU
VOLLNARBIGE CHROMGERBUNG, FÄRBUNG/OBERFLÄCHENBEHANDLUNG MIT HALB-ANILIN, HALBPOLYURETHAN FINISH AUF WASSERBASIS
PLENA FLOR, CURTIDO AL CROMO, TINTURA/ACABADO POR IMPREGNACIÓN A LA SEMI-ANILINA, ACABADO SEMIPOLIURETANO AL AGUA



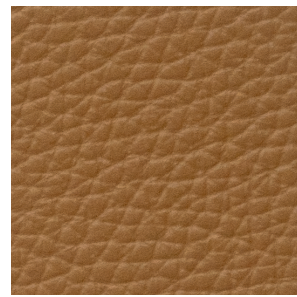
0300



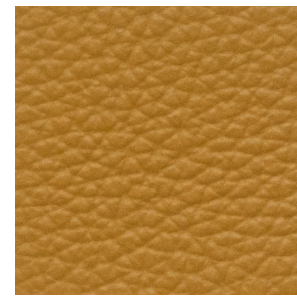
0320



0307



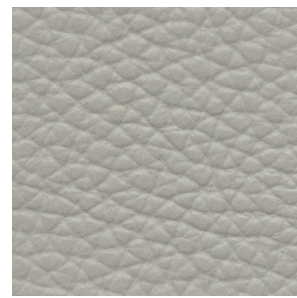
0315



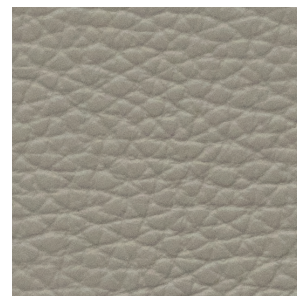
0319



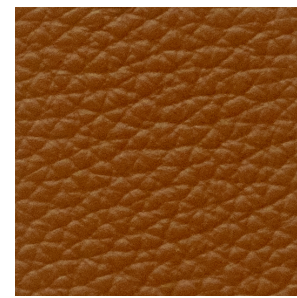
0360



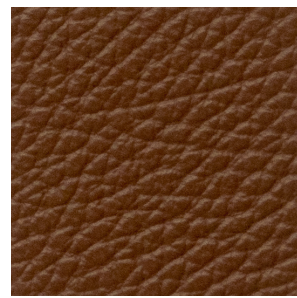
0301



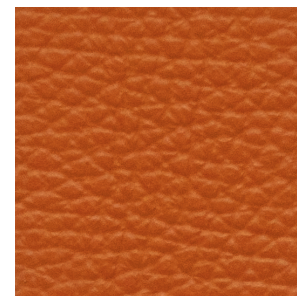
0311



0314



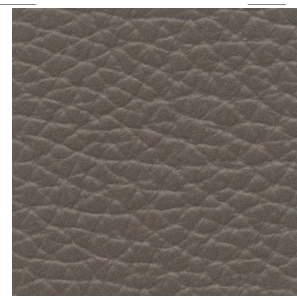
0324



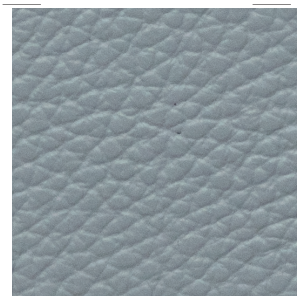
0318



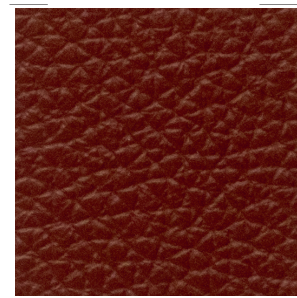
0359



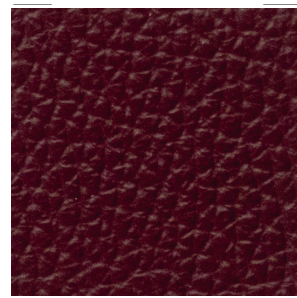
0312



0380



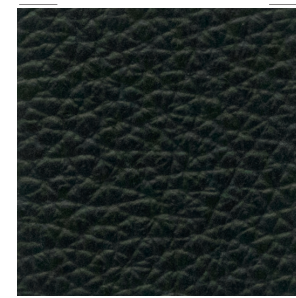
0322



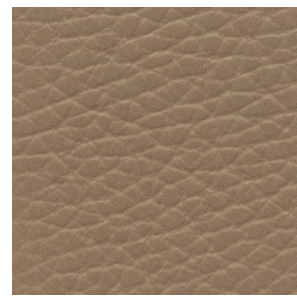
0329



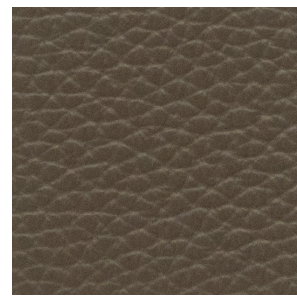
0349



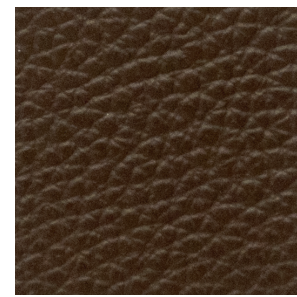
0308



0340



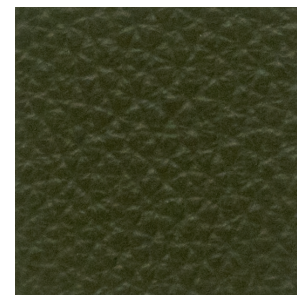
0341



0374



0379



0346



0306